



Biodiversity Baseline Study

Presentation to
Swale Local Plan
Panel

8th October 2020



Introduction

Purpose of Brief – to undertake a mapping exercise to assist SBC prepare for biodiversity requirements of Environment Bill and make recommendations about how these can be incorporated into the Local Plan, specifically:

- **Biodiversity Net Gain (BNG): All developments (with limited exceptions) will be required to provide minimum 10% net gain measured by Defra Biodiversity Metric 2.0 – can be onsite or offsite**
- **Local Nature Recovery Strategies (LNRS): Local Authorities required to publish a report and maps to identify priority biodiversity features and identify opportunities to promote nature recovery**

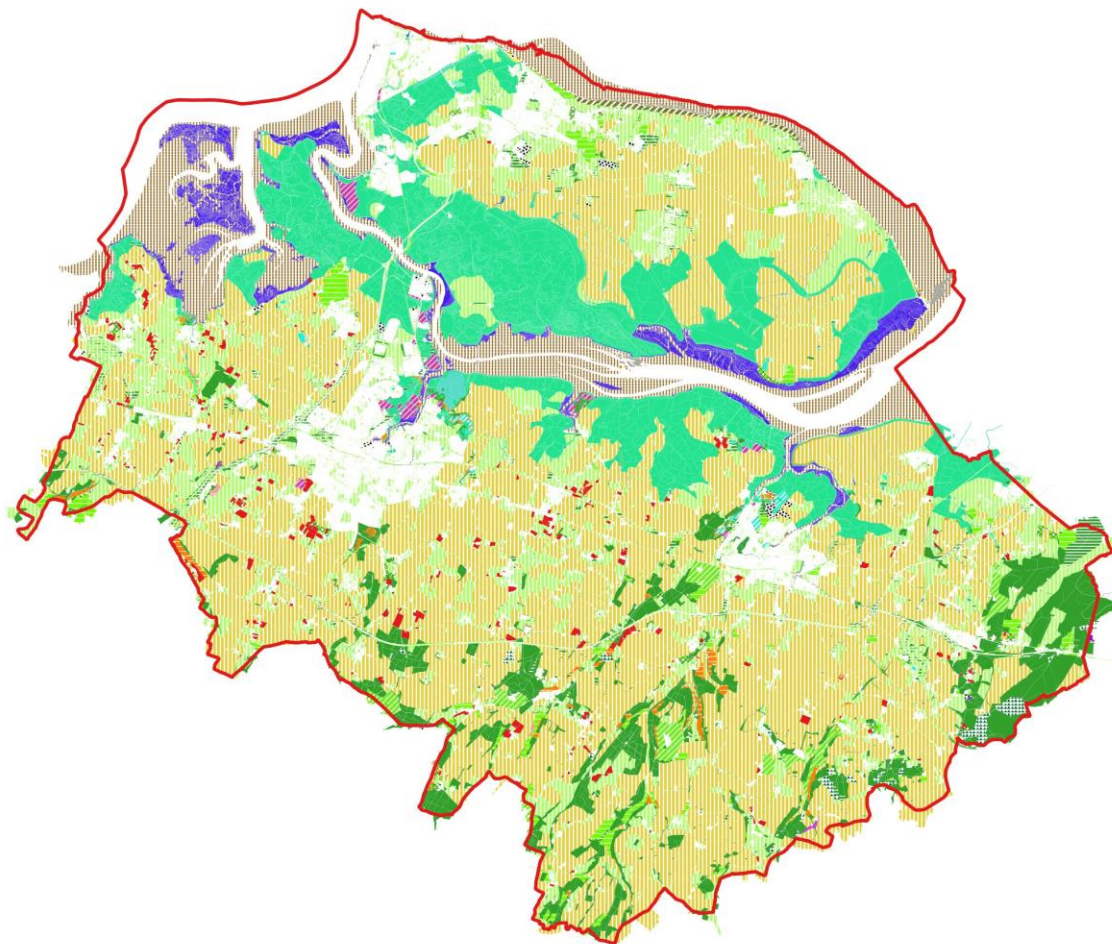


Presentation Structure

- **Briefly run through rationale of the mapping exercise: classifying habitats, identifying high value habitat, identifying Nature Recovery Priority Areas**
- **Recommendations on developing a Swale LNRS to guide BNG strategy and Local Plan policy**
- **Recommendations on provision of onsite BNG in SHLAA sites according to objectives of LNRS**
- **Recommendations for establishing an offsite BNG policy within the Local Plan according to objectives of LNRS**



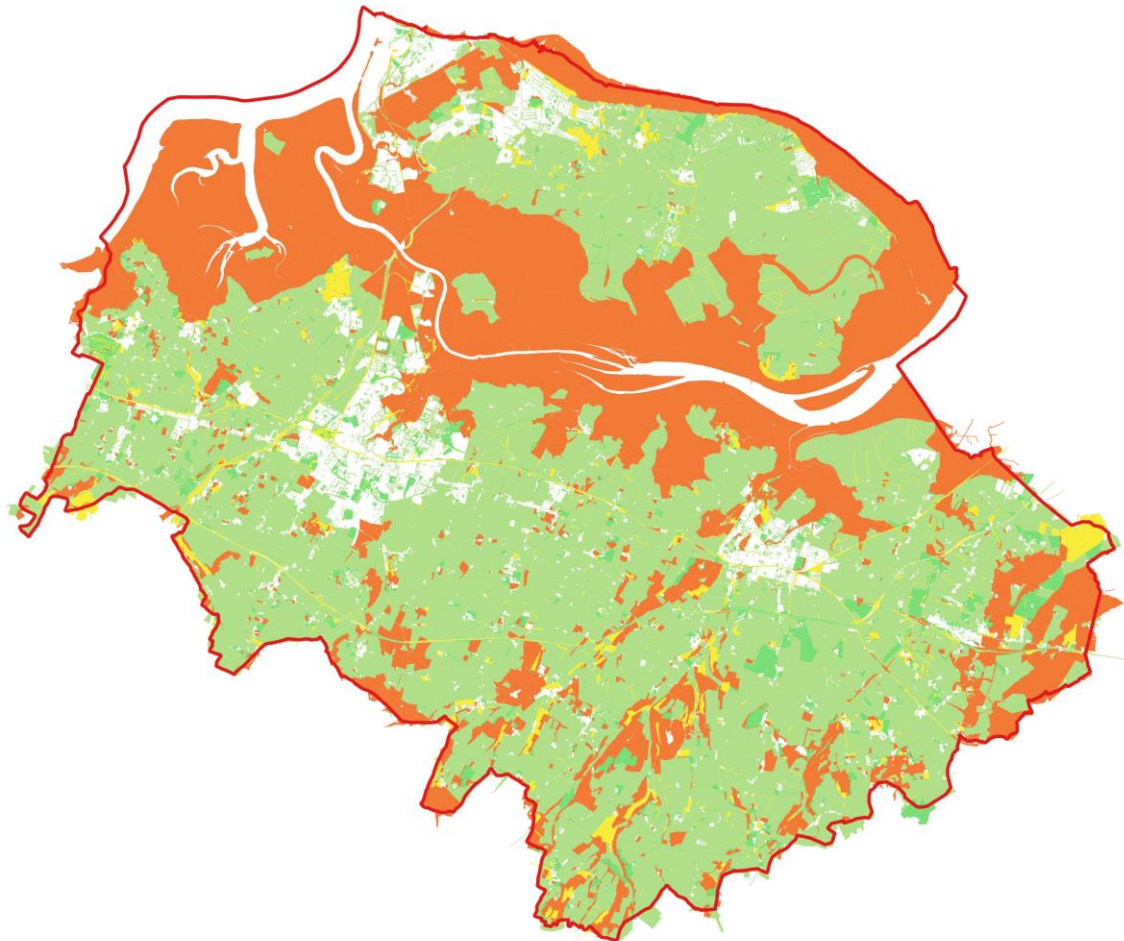
Habitat Classification



Habitat Types

- Artificial littoral rock
- Artificial open water
- Bracken
- Coastal lagoons
- Coastal saltmarsh
- Coastal sand dunes
- Coniferous woodland
- Croplands
- Ditches
- Floodplain wetland mosaic
- Intertidal sediment - coarse littoral sediment
- Intertidal sediment - littoral mixed sediment
- Intertidal sediment - littoral mud
- Littoral rock
- Lowland beech and yew woodland
- Lowland calcareous grassland
- Lowland deciduous woodland
- Lowland dry acid grassland
- Lowland fens
- Lowland heathland
- Lowland meadows
- Maritime cliffs
- Modified grassland
- Open mosaic habitat on previously developed land
- Other acid grassland
- Other calcareous grassland
- Other inland rock and scree
- Other neutral grassland
- Other neutral grassland with other habitats
- Other woodland/scrub
- Pond
- Quarry lakes
- Reedbeds
- Sandpit, quarry or open cast mine
- Supralittoral Rock
- Traditional orchard
- Undetermined wetland
- Unvegetated shingle
- Vegetated shingle
- Wet woodland
- Wood pasture and parkland

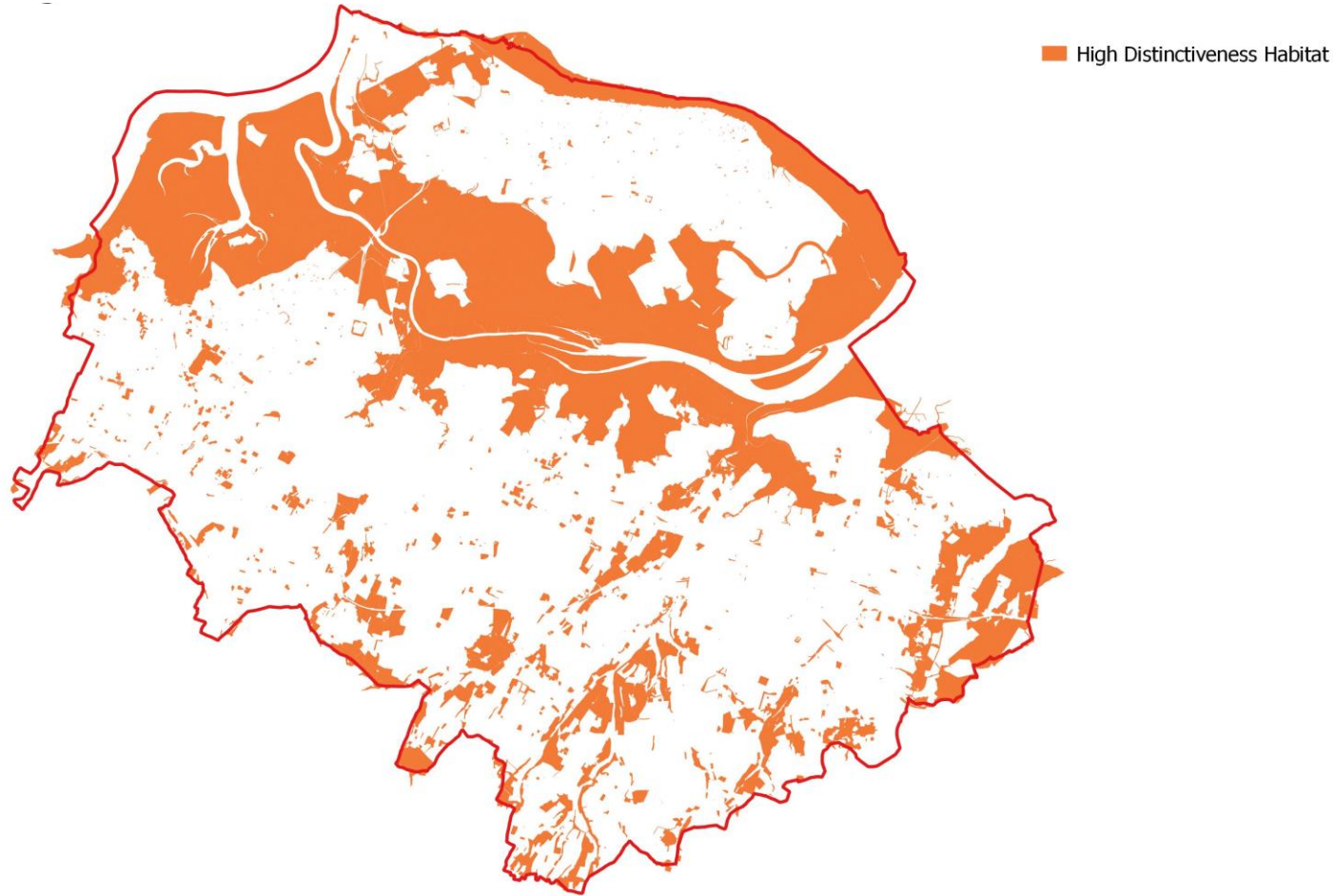
Habitat Distinctiveness



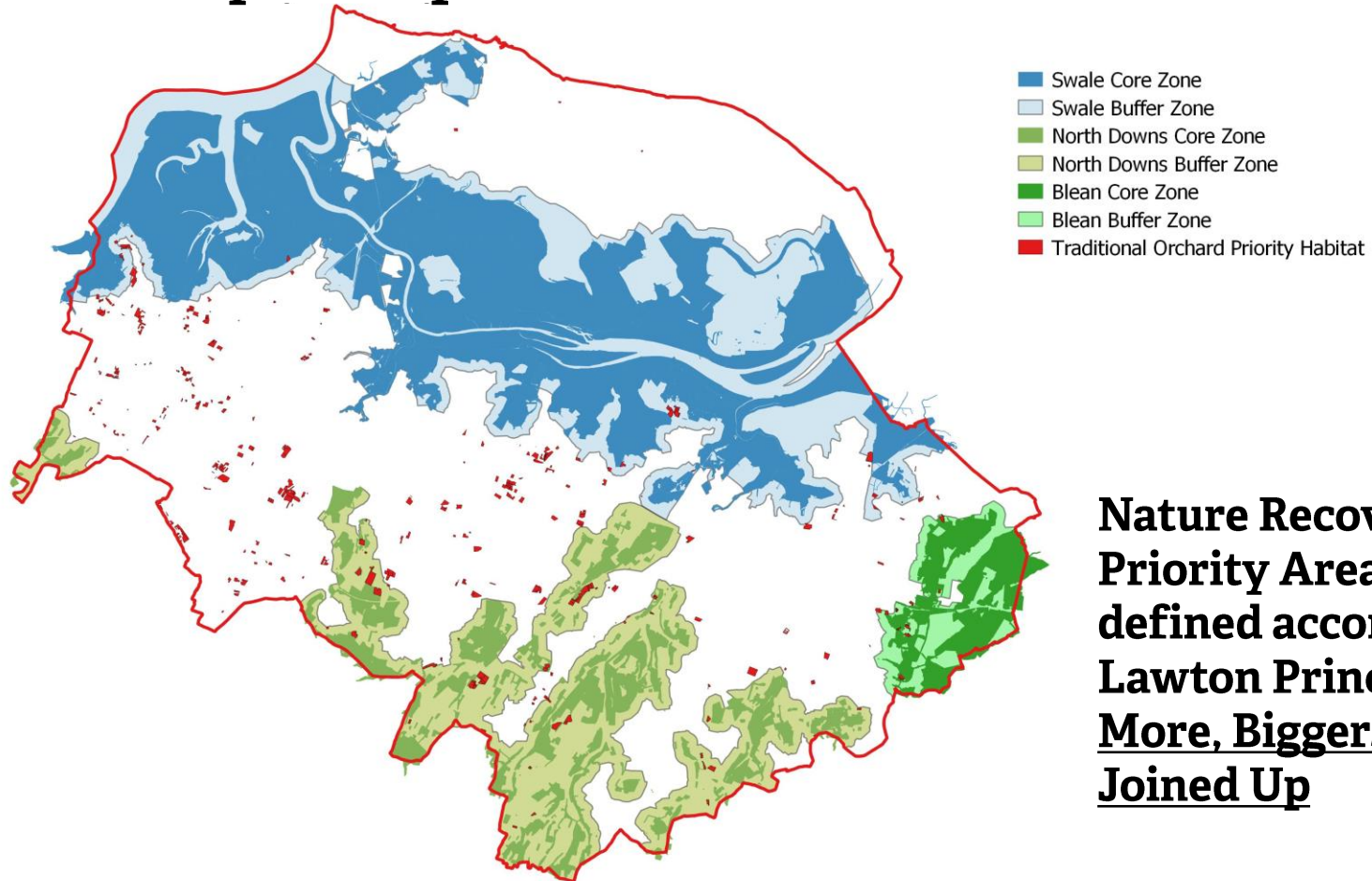
Habitat Distinctiveness

- Low
- Low +
- Medium
- Medium +
- High

High Distinctiveness Habitat



Nature Recovery Priority Areas



**Nature Recovery
Priority Areas
defined according to
Lawton Principles –
More, Bigger, Better,
Joined Up**

Local Nature Recovery Strategy

- **Nature Recovery Priority Area mapping forms basis for developing a Swale LNRS**
- **Legislative duty in Environment Bill to describe, identify and map biodiversity features, priorities and opportunities to promote nature recovery.**
- **LNRS would create a coherent framework for coordinating BNG strategy within a SPD, as well as integrating other policy areas such as Climate Change and BGI**

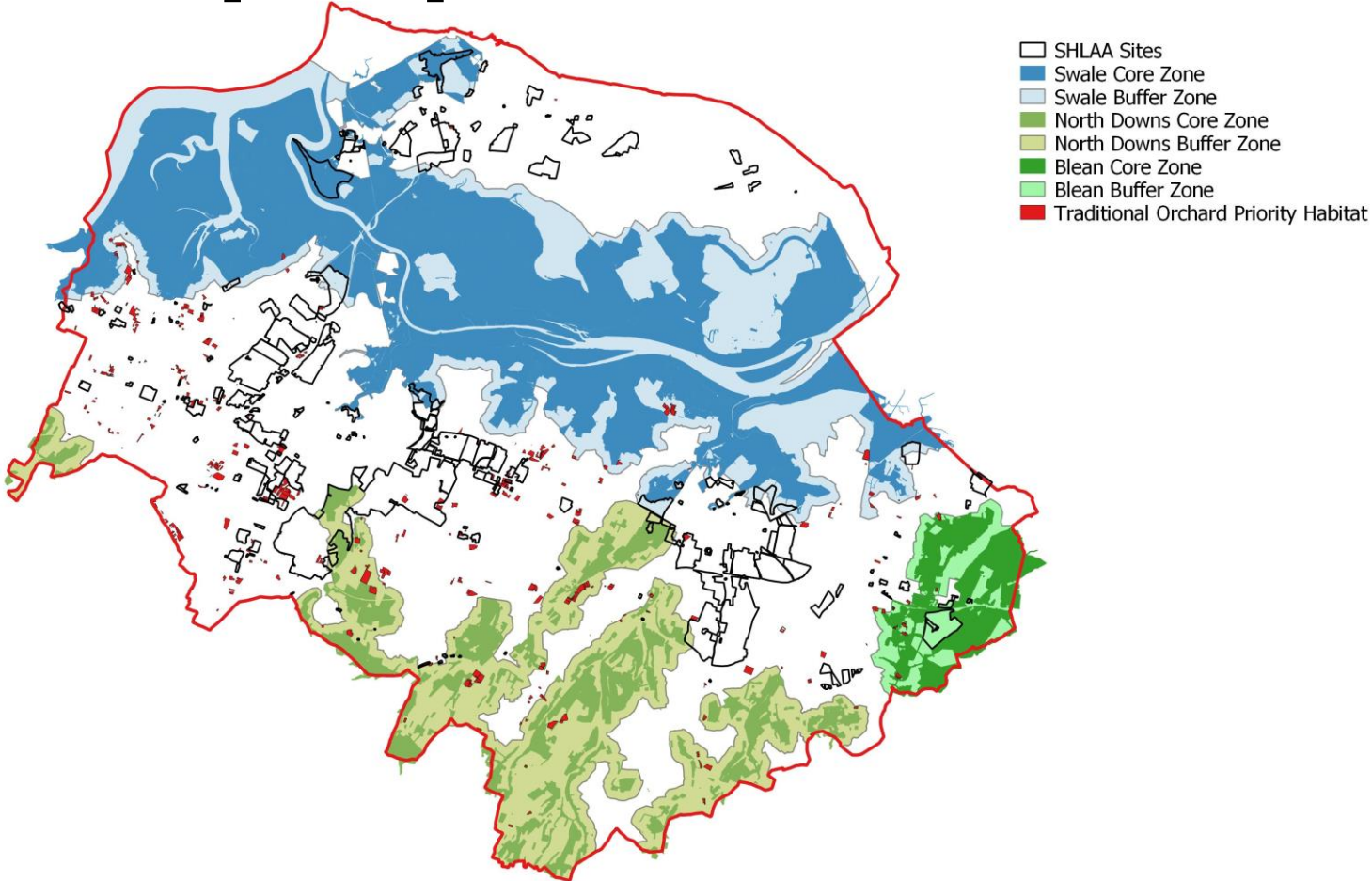


Recommendations on SHLAA Sites

- **Specific recommendations for onsite BNG on SHLAA sites detailed in report**
- **Recommendations are intended to identify particular opportunities for and challenges to achieve BNG on particular sites in the context of Nature Recovery Priority Areas**
- **Coincidence of proposed sites and Nature Recovery Priority Areas does not imply these sites should be precluded from Local Plan. If planned sensitively such developments could provide substantial benefits to meeting LNRS targets (for example Site East of Iwade)**



Nature Recovery Priority Areas and SHLAA Sites



Recommendations for Offsite BNG

Nature Recovery Priority Areas represent a framework for coordinating the delivery of offsite BNG, and a basis for further work including:

- **Developing SPD policies requiring that offsite BNG is directed towards meeting targets of Nature Recovery Priority Areas**
- **Further work to target landowners who may be prepared to put forward land on a register of possible BNG sites**
- **Further work for targeting locations where BNG can be coordinated with other policy goals – Climate change and BGI**



Questions?

